

## RapidDeck

---

### Car Park Specification

---

Unique, High Performance, Rapid Curing,  
Cold Applied Car Park Spec.

---




## **Contents**

- **Introduction**
- **Product features**
- **System Application**
- **Mixing Guide**
- **Product Identification**

## Introduction

EcoProof are manufacturers of high performance, technologically advanced cold liquid membranes for the waterproofing of roofs, walls, floors, balconies and Car Parks. Each of our systems are leaders in their respective fields, due to their unique credentials in waterproofing, longevity and application speed, making them the preferred choice of quality, cost effective systems. At EcoProof, we are dedicated to providing our customers with the support they need through our technical team, by offering specifications, technical data and product guarantees, which come as standard with all our systems. For more information on any of our products, please contact our technical support team on 00 350 58478000 or email [enquiries@ecoproofinternational.com](mailto:enquiries@ecoproofinternational.com)

## Product Range

RapidRoof  is a rapid curing, seamless, fully bonded system that comes in waterproof or anti-skid variants. RapidRoof is suitable for use over many surfaces including asphalt, timber, felt, metal and concrete. Available in either waterproof or Anti-Skid, it has a wide variety of applications - from flat roofs and balconies to stairways and car park decks. For more information on RapidRoof, please contact our technical support team on 00 350 58478000 or email [enquiries@ecoproofinternational.com](mailto:enquiries@ecoproofinternational.com)



FastCoat is a polyurethane waterproofing liquid, has very good UV and outdoors resistance. EcoProof FastCoat Pro waterproofing system is a rapid curing, tough and flexible hand applied pure polyurethane. With exceptional performance and ease of application FastCoat Pro is backed by a 25-year BBA certification. FastCoat Pro is ideal for Flat Roofs, Pitched Roofs, Balconies / Terrace. FastCoat Pro is a single component brush or roller applied seamless and fully bonded membrane suitable for application onto both new builds and refurbishment projects. FastCoat Pro Guarantees range from 10 – 25 years depending on the spec applied.



Liquid Rubber is an instant set spray applied waterproofing membrane that can be applied up to a rate 1000sq/m per day. It is fully bonded to the surface and completely seamless and sets upon contact with the surface. Its elasticity of over 1000% provides a flexible membrane suitable for any surface. For more information on Liquid Rubber, please contact our technical team, or alternatively visit [www.ecoproofinternational.com](http://www.ecoproofinternational.com)



### **Contractor training**

EcoProof host regular training programmes throughout the year to provide contractors with the necessary skills and product knowledge to become fully certified EcoProof Approved Contractors. For more information please call our technical help desk on 00 350 58478000 or email [enquiries@ecoproofinternational.com](mailto:enquiries@ecoproofinternational.com).

### **Product guarantee**

EcoProof offer a range of guarantees, from 10-25 years. EcoProof work closely with Specifiers, Architects and Contractors alike to ensure the correct specification is provided to suit all budgets and the most demanding waterproofing requirements.

### **Contact details**

EcoProof International Ltd

Unit 96 Harbours Walk

The New Harbours

Gibraltar

GX11 1AA

T.00 350 5847800071

[E. enquiries@ecoproofinternational.com](mailto:enquiries@ecoproofinternational.com)

## Product Features

### What is RapidDeck?

RapidDeck is a cold applied, fully bonded, seamless, PMMA resin-based Car Park system. It is a rapid curing membrane that provides a tough surface coupled with up to 200% elasticity. With an Anti-Skid finish and available in various colours subject to minimum quantity. RapidDeck provides a cured membrane ideal for vehicle traffic with great flexibility and fast application. RapidDeck is ideal for domestic projects or larger industrial car parks.

### Key features

- **Specially formulated for Car Park applications**
- **20-year product guarantee**
- **200% elasticity**
- **Resistant to wind uplift**
- **Full training and on-site support available**
- **Suitable for all types of Vehicle traffic**
- **Can be applied between 0°C – 35°**
- **Full technical support team**
- **Cures in 20 minutes per coat**

### Fully bonded and seamless membrane

RapidDeck Car Park system is fully-bonded to the substrate. The system is resistant to any wind uplift that could reasonably be expected during the products lifespan.

### Multiple applications

RapidDeck Car Park system can be used for Car Park applications of almost any size or complexity.

### **Fully trafficable**

RapidDeck Car Park system can withstand heavily trafficked areas such as Domestic Car Parks, Residential Car Parks and multi-Story when applied to spec.

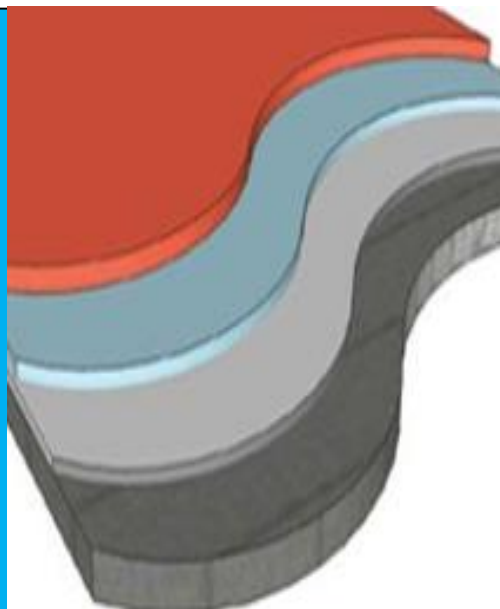
### **System Applications:**

The substrate must be clean and dry prior to application, the surface must be free from dust, dirt and natural growth.

The surface will need to be checked for cracks and mechanical damage and repaired where necessary as the RapidDeck need to be applied to a sound and suitable surface.

#### **Top Deck**

- Existing surface cleaned and fully prepared.
- Fully prime the surface using RapidDeck Primer at a coverage of 0.5kg per m<sup>2</sup>
- Waterproof applied a 1kg fully reinforced (150gsm reinforcement Matting)
- Whilst wet apply an additional 1kg per m<sup>2</sup> of RapidDeck on top (wet on wet)
- Apply scratch coat at 4kg per m<sup>2</sup> and cast 4kg of quartz aggregate to fully broadcast.
- TopCoat needs to be applied at 0.8kg per m<sup>2</sup>



#### **Top Deck Application**

The existing surface will need to be checked for cracks and mechanical damage and repaired where necessary.

The surface requiring coating will need to be cleaned using a power washer at a minimum of 2000psi or something similar.

Once the surface is fully prepared and completely dry the RapidDeck primer will need to be applied at 0.5kg per m<sup>2</sup> ensure this is mixed thoroughly using a paddle mixer. The primer will typically cure in 20 minutes depending on weather conditions, EcoProof recommend leaving 1 hour before overcoating.

Application for the waterproof will be a wet on wet system, apply 1kg per m<sup>2</sup> of RapidDeck Waterproof and immediately lay 150gsm Reinforcement Matting into the wet coating and fully saturate / embed leaving no pinholes or fish mouths. Whilst wet apply a further 1kg per m<sup>2</sup> of RapidDeck over the top.

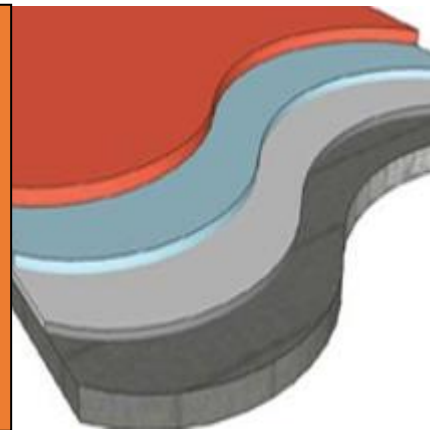
Once the RapidDeck waterproof has fully cured apply the RapidDeck Scratch Coat in 1 coat at a coverage rate of 4kg per m<sup>2</sup> and immediately cast 4kg per m<sup>2</sup> of Quartz Aggregate and fully broadcast.

Scratch Coat will typically cure around 20 minutes but recommended leaving an hour before removing all loose aggregate using a brush or something similar.

Once all the loose aggregate has been removed apply the RapidDeck Top Coat at a coverage rate of 0.8kg per m<sup>2</sup> using a short-pilled roller.

### **Middle Deck**

- Existing surface needs to be clean, dry and fully prepared
- Fully prime the surface using RapidDeck Primer at a coverage rate of 0.5kg per m<sup>2</sup>
- Apply the Scratch Coat at 1.6kg per m<sup>2</sup> and cast 4kg of quartz aggregate and fully broadcast.
- Top Coat is applied at 0.8kg per m<sup>2</sup>



### **Middle Deck Application**

Ensure the surface that requires RapidDeck is free from cracks and mechanical damage, if present repair where necessary.

The surface will need to be cleaned using a minimum 2000psi power washer to remove all loose material, dirt and natural growth.



Once the surface is completely dry and fully prepared, apply RapidDeck Primer at a coverage rate of 0.5kg per m<sup>2</sup> using a short-pilled roller. This will typically cure in 20 mins but recommend leaving 1 hour before overcoating.

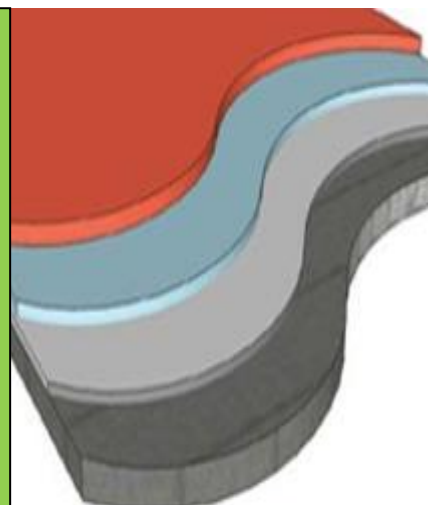
The RapidDeck Scratch Coat will need to be applied in 1 coat at a coverage rate of 1.6kg per m<sup>2</sup> and immediately cast 4kg per m<sup>2</sup> of Quartz Aggregate to fully broadcast.

EcoProof recommend leaving 1 hour before removing the loose aggregate using a brush or something similar.

Apply the RapidDeck Top Coat at a coverage rate of 0.8kg per m<sup>2</sup> using a short-pilled roller.

### **Ramp**

- Existing surface needs to be clean, dry and fully prepared.
- Fully prime the surface using RapidDeck Primer at a coverage rate of 0.5kg per m<sup>2</sup> and immediately cast 0.5kg of quartz aggregate.
- Apply 1<sup>st</sup> coat of Scratch Coat at 2kg per m<sup>2</sup> and cast 1.5kg of quartz aggregate.
- Apply 2<sup>nd</sup> coat of Scratch Coat at 2kg per m<sup>2</sup> and cast 4kg of quartz aggregate.
- Top Coat is applied at 0.8kg per m<sup>2</sup>



### **Ramp Application**

Any mechanical damage or cracks will need to be repaired before applying any liquid coatings.

The ramp will need to be cleaned using a 2000psi power washer to remove dirt, loose materials and natural growth.

Once the ramp is completely dry and fully prepared the existing surface will need to be fully primed using RapidDeck Primer at a coverage rate of 0.5kg per m<sup>2</sup> and whilst this is still wet cast 0.5kg of Quartz Aggregate at an even coverage.

The RapidDeck Scratch Coat will need to be applied in 2 coats.

1<sup>st</sup> coat applied at a coverage rate of 2kg per m<sup>2</sup> and whilst wet cast 1.5kg per m<sup>2</sup> of Quartz Aggregate.



Once this is fully cured, recommended leaving 1 hour all loose aggregate will need to be removed with a brush or something similar.

2<sup>nd</sup> coat applied at a coverage rate of 2kg per m<sup>2</sup> and whilst wet cast 4kg per m<sup>2</sup> of Quartz Aggregate.

Remove all loose aggregate once fully cured.

Apply the RapidDeck Top Coat at a coverage rate of 0.8kg per m<sup>2</sup> using a short-pilled roller.

## Mixing Guide

### RapidDeck mixing

#### Mixing

It is advised that all products are mixed using a paddle mixer where available, or with similar apparatus.

Ensure all products are mixed thoroughly to ensure even curing. Typically, 1 minute of mixing is sufficient.



Product Volume	Catalyst
1KG	20g
5KG	100g
10KG	200g

### RapidDeck Primer

Decant the required amount of primer into a separate pot and mix with the RapidDeck Catalyst. Ensure this is mixed thoroughly using a paddle mixer.

Ratios for Primer and Catalyst is 200g per 10kg.

Typical cure times for the Primer is 20 mins depending on weather conditions but recommend leaving an hour before overcoating.

### **RapidDeck Waterproof**

Same as the RapidDeck Primer decant the required amount of RapidDeck Waterproof into a separate container and mix in the catalyst using a paddle mixer.

200g of catalyst per 10kg of waterproof.

Typical cure times for the RapidDeck is 20 minutes depending on weather conditions but recommend leaving an hour before overcoating.

### **RapidDeck Scratch Coat Top Deck**

Mixing ratios for the Scratch Coat Top Deck:

40% of Part A - 60% of Part B

#### **Based on 1kg;**

0.4kg of Part A and 0.6kg of Part B

#### **Based on 25kg**

10kg of Part A and 15kg of Part B

---

### **RapidDeck Scratch Coat Middle Deck**

Mixing ratios for Scratch Coat Middle Deck:

50% of Part A – 50% of Part B

#### **Based on 1kg;**

0.5kg of Part A and 0.5kg of Part B

**Based on 25kg;**

12.5kg of Part A and 12.5kg of Part B

---

**RapidDeck Scratch Coat Ramp Application**

Mixing Ratios for Scratch Coat Ramp Application.

33% of Part A and 66% of Part B

**Based on 1kg**

0.33kg of Part A and 0.66kg of Part B

**Based on 25kg**

8.25kg of Part A and 16.5kg of Part B

---

**Repairs to existing surface**

RapidDeck can be applied to felt, asphalt, timber, concrete and many other surfaces (please check our website for the current list of applicable surfaces).

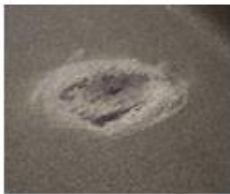
We have shown a few examples below, although the surface may vary the method is always the same.

Clean surface of area to be detailed, apply RapidDeck Primer, embed Joint Tape and allow to cure (typically 20 minutes).

## Products required

For detailing, we recommend the use of Detailing Primer and Joint Tape.

### Blister



*Blister cleaned out*



*Joint Tape cut to shape*



*Coating of Primer*



*Joint Tape embedded into Primer*



*Completed repair*

### Gaps or cracks



*Catalyst added to base product and mixed*



*Catalysed product poured into aggregate*



*Mix together*



*Fill hole, gap or crack*



*Trowel to a smooth finish*

### Please Note:

Unless otherwise stated, once mixed, all liquid products within the RapidRoof product range have a typical pot life of 20 minutes at 10oC. Be sure to pour out all the product onto the surface to ensure the curing process doesn't accelerate in the tin. Check mixing guide for further information.



## **Frequently asked questions**

### **What to do if it rains?**

It is advised to always check the weather forecast in advance but for circumstances where rain is an immediate problem, stop application immediately.

Any product applied on a wet surface risks not bonding correctly.

If within the 20-minute curing window, cover up your existing work and wait for a good dry spell to continue.

Thoroughly dry coat between applications.

### **Can we apply different layers on different days?**

RapidDeck does not have to be applied in one day, you can apply one layer at a time if it is necessary.

It is advised to always clean the surface before application of the next layer if there has been such a break from application.

### **How clean does the surface have to be?**

RapidDeck is a fully bonded system; if there is any dust or dirt on the surface RapidDeck will bond to this.

Ensure the surface is clean by using a high-pressure jet wash or similar cleaning method.

Ultimately, each project is unique, and it's down to the applicator to decide the best method of cleaning for that specific surface.

### **Can I slow down the curing process?**

Using less or more catalyst can affect curing time, but it may also cause an uneven and incomplete curing of the membrane.

We advise to always stick to the prescribed catalyst to product ratio.

**What can I clean my brushes or roller in?**

We strongly advise disposing of brushes and rollers after each use, this avoids any contamination occurring in the membrane and ensures a uniform finish.

Due to this we advise using cheap brushes and short pile rollers.

**Where can I get further information?**

For further information on any of our products and systems please contact our technical team on 00 350 58478000 or email [enquiries@ecoproofinternational.com](mailto:enquiries@ecoproofinternational.com)

Further information and technical data is also available on our website at [rapidroof.co.uk](http://rapidroof.co.uk).